

SOUTHWARK COUNCIL PLANNING	
CASE FILE COPY	
DATE RECEIVED	DECISION AND DATE
08 APR 2011	
REGISTERED NUMBER	
0 AP 375 1	

General notes:
This drawing must be read in conjunction with the designer's risk assessment, specification and all other relevant documentation and drawings. KSR architects accept no liability for any expense, loss or damage of whatsoever nature and however arising from any variation made to this drawing or in the execution of the work to which it relates which has not been referred to them and their approval obtained.
Do not scale from this drawing or the digital data, only figured dimensions are to be used. For Planning refer to linear scale.
Check all dimensions on site.

Notes/Legends

Rev Notes 42 mm x 31 214 d

Stamp

Key Plan

PLANNING APPLICATION
Dec 2010



KSR architects
14 Greenland Street
London
NW1 0ND
T: +44 (0)20 7892 5000
F: +44 (0)20 7892 5050
www.ksr-architects.com

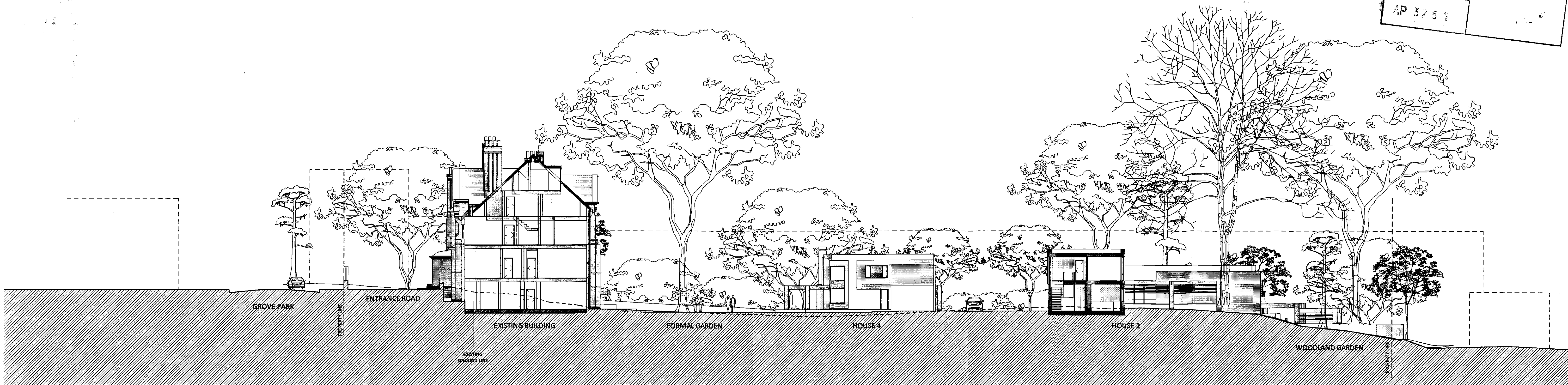
Project:
123 GROVE PARK
London

Title:
EXISTING SITE PLAN

Date: 01/24/11 Drawn By: LRG Checked: LRG

Scale: 1:200 @A1 / 1:400 @A3

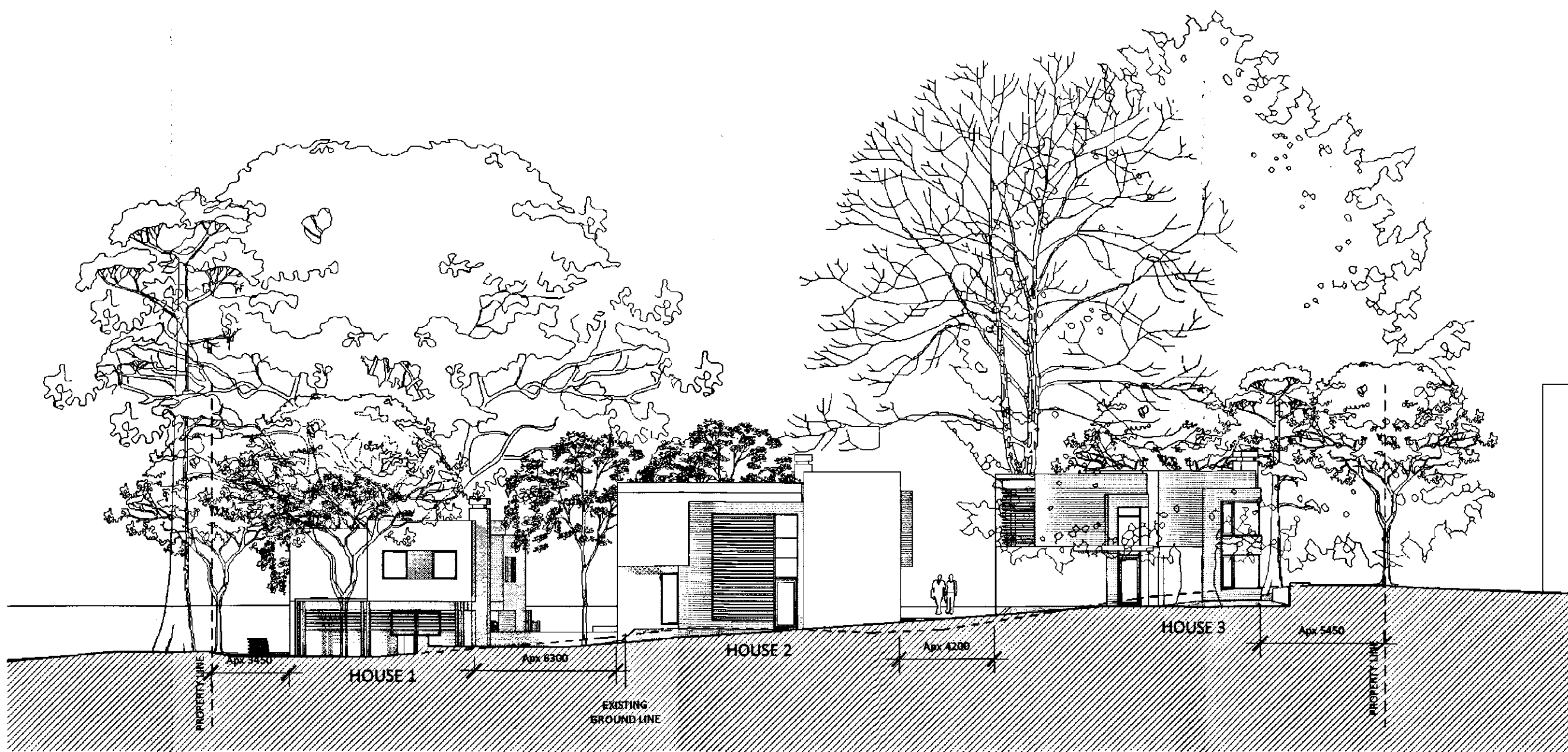
Project Ref: GRP Drawing No: GRP-ST 101a Revision:



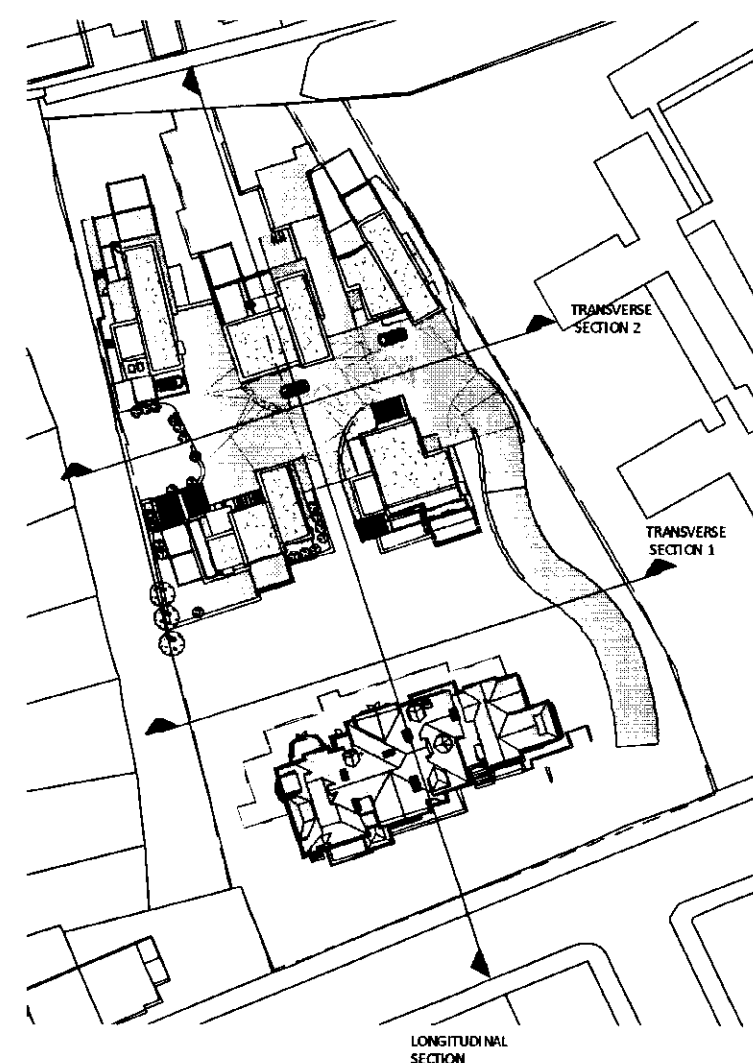
PROPOSED SITE LONGITUDINAL SECTION
1:200



PROPOSED SITE TRANSVERSE SECTION 1
1:200



PROPOSED SITE TRANSVERSE SECTION 2
1:200



REF PLAN - SITE SECTION
1:1000

General notes:
This drawing is copyright of KSR architects. This drawing must be read in conjunction with the design's risk assessment, specification and all other relevant documentation and drawings. KSR architects accept no liability for any expense, loss or damage of whatsoever nature and however arising from any variation made to the drawing or in the execution of the work to which it relates which has not been referred to them and their approval obtained.
Do not scale from this drawing or the digital data, only figured dimensions are to be used. For Planning refer to linear scale.
Check all dimensions on site.

Notes/Legends

Stamp

Key Plan

PLANNING APPLICATION
Dec 2010

KSR architects
14 Greenland Street
London
NW1 0ND
t: +44 (0)20 7892 5000
f: +44 (0)20 7892 5050
www.ksr-architects.com

KSR
architects

Project:
123 GROVE PARK
London

Proposed Site Sections

Rev: Notes

Date: Dec 2010
Scale: As Indicated

Drawn By: LRG

Checked: LRG

Project Ref: GRP

Drawing No: GRP - ST 201

Revision: